

2025

WOODNOTES



WHEN AUTHENTIC *natural* ELEMENTS MEET

The concept behind Woodnotes products is to combine artistic creativity inspired by Finland's rugged nature with technology to shape local raw materials: wood and paper. All Woodnotes products reflect the spirit of sustainable Finnish design: simplicity, harmony and functionality. The characteristics of pure natural materials are expressed in clean, long-lasting forms resulting in timeless products of rare aesthetic quality.





5

PAPER YARN CARPET
SAN FRANCISCO 1430501
NATURAL-WHITE

DELICATE SHIFTS OF NATURAL HUES

At the heart of Woodnotes lies the pristine nature of the North and the beauty of its seasons, with their subtle nuances of hues that we come to appreciate when we take a moment to pause. Respect for nature is an integral part of the Woodnotes' philosophy, aesthetics, and the way our products are crafted.





NARROW SWIVEL
K CHAIR 46007
 20TH ANNIVERSARY
 COLOUR PARK
SAN FRANCISCO 1432715
 ASPEN GREEN-STONE



"A scarcity of light is typical for Finland. Our products allow you to see and feel a resemblance with nature's textures and colour atmospheres, not as direct references, but subtle moods and moments. Things like the first snow, hoar frost on the spring grass, summer light, the shadowless light of the darker seasons, the immersive inkiness of the dark months of the year." –Minna Ahokas

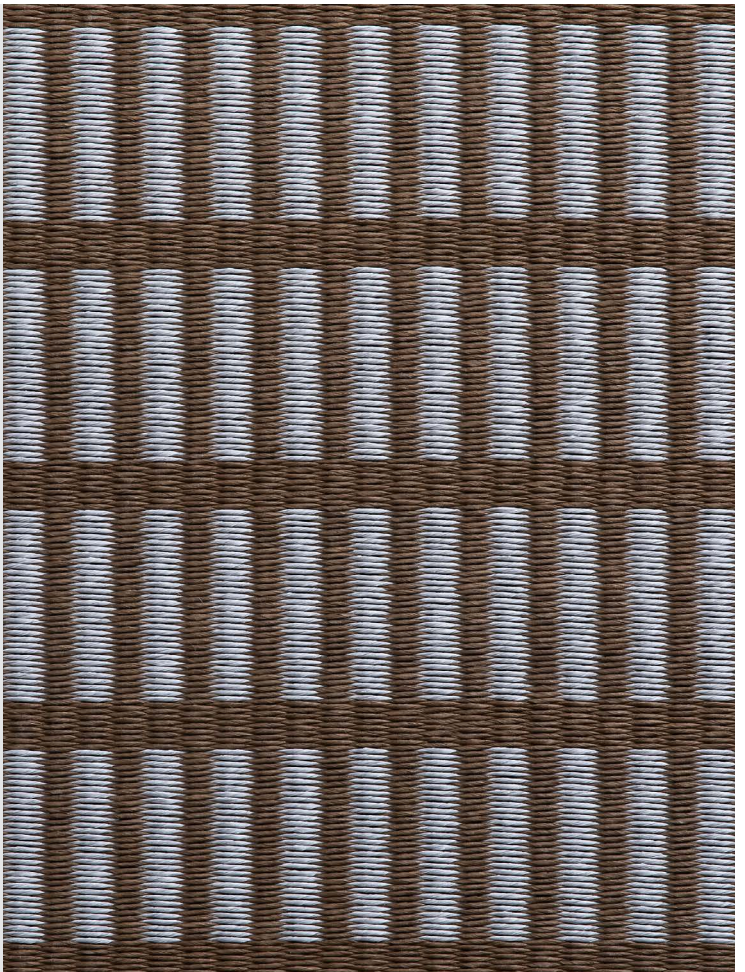
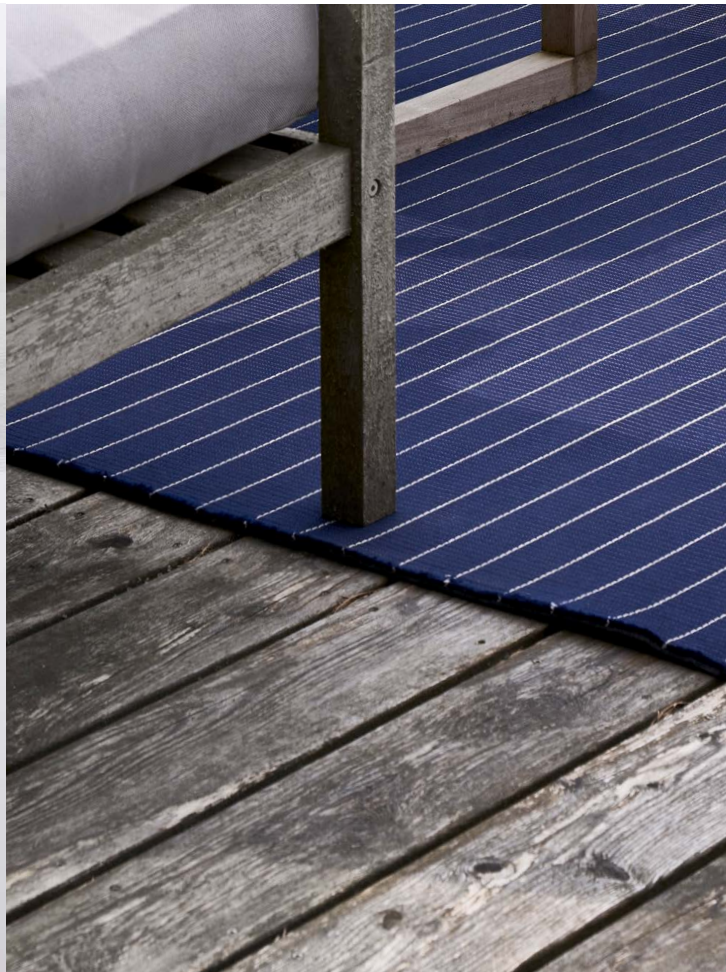


THE K CHAIR COMES IN *three new colours* IN HONOUR OF



ITS 20TH ANNIVERSARY: BRICK, CONCRETE AND PARK





MASTER COLOURIST RITVA PUOTILA

Ritva Puotila was an internationally renowned and award-winning textile artist when, during a private art exhibition, she had the idea that paper yarn could also be used for home textiles. Her son, Mikko Puotila, was inspired by her vision, and together they set out to develop products and a business around this durable paper yarn material. This was the beginning of Woodnotes. From the very start, Ritva Puotila's masterful eye for colour has been at the heart of Woodnotes. She had the ability to perceive the smallest details and subtle variations in nature—and to translate them into the language of art and Woodnotes products.

IN/OUT CARPET
LINE 15240405
 NAVY BLUE-LIGHT SAND

CO-FOUNDER, TEXTILE
 ARTIST RITVA PUOTILA

PAPER YARN CARPET
NEW YORK 1184530
 WILLOW BROWN-LIGHT GREY

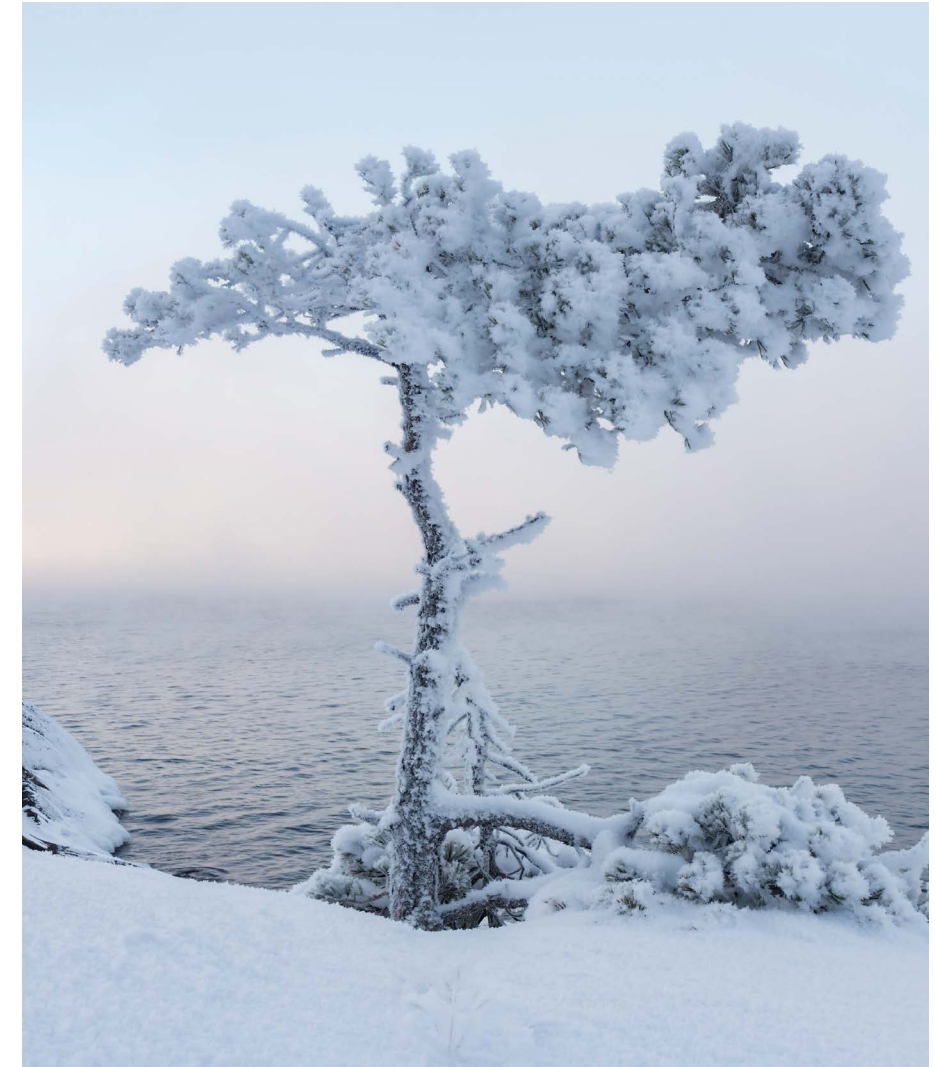
TUFTED WOOL LINEN CARPET
SAMMAL 1610101 WHITE



“Every Woodnotes product conveys a sense of nature: the feeling of a gentle breeze, light filtering through a tree’s foliage – some products even evoke the sensation of the first frost of winter.” –Johanna Vuorio

PAPER YARN CARPET
1432715 SAN FRANCISCO
ASPEM GREEN STONE





PAPER YARN CARPET
RAILWAY 116151
STONE-WHITE

SIRO CHAIR 4400
OAK

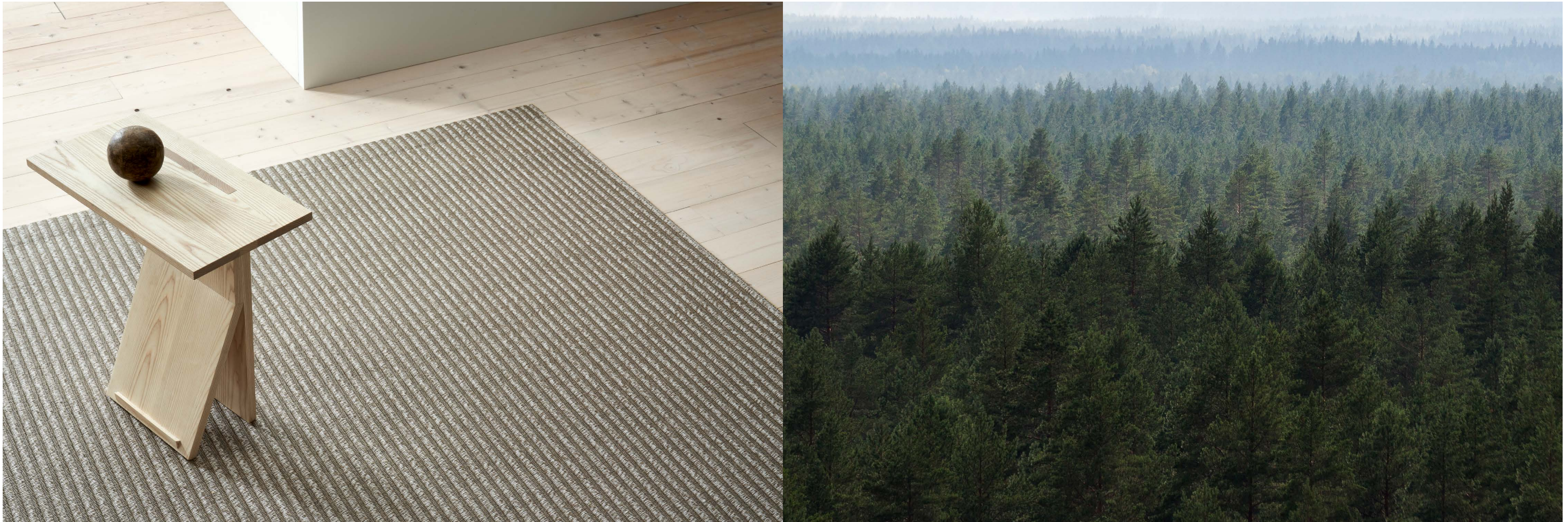
CHAIN OPERATED
ROLLER BLIND
VISTA 21311 WHITE



PAPER YARN CARPET
NEW YORK 11895
BLACK-NATURAL

THE HARMONY OF PAPER

“Paper is a material like no other; I respect it. When used and maintained properly, it will last for a very long time. It is beautiful in its simplicity and has its own, distinct properties.” -Irmeli Saarenpää



WOOD WISDOM

Our paper yarn carpets would not exist without forests, without trees that have grown in pure air. Our paper yarn carpets are made from food-grade kraft paper derived from coniferous trees. These trees are given a new life in the form of our carpets and small products, continuing to act as carbon sinks for decades after their time in the forest. This natural material brings a sense of tranquillity and groundedness to any space.

PAPER YARN CARPET
FIELD 1313215
NUTRIA-STONE

PAPER YARN CARPET
CUT STRIPE 115915
BLACK-STONE



HAND KNOTTED WOOL CARPET
GRID 18600130
WHITE-LIGHT GREY



HIDE AND SEEK

Our blind fabrics and the blinds we make from them are truly special. The opacity of the blinds varies throughout the day. It can be surprising and capricious what a blind reveals and what it hides. The fabrics reach out for something primeval in the human mind, speak to something very deep within us. You could describe the feeling as being under the shelter of the foliage of trees.

ROLLER BLIND
MORNING 211115
WHITE-STONE





PAPER YARN CARPET
ROAD 1440215 GREY-STONE



“Paper is ecological and allergy friendly. The fact that paper is made from wood, a natural material, creates its own kind of mood. We like to joke that defects in the yarn show where the knots in the wood used to be.”
-Irmeli Saarenpää



PAPER YARN CARPET
LINE 12459 NATURAL-BLACK

FREEDOM OF SPIRIT

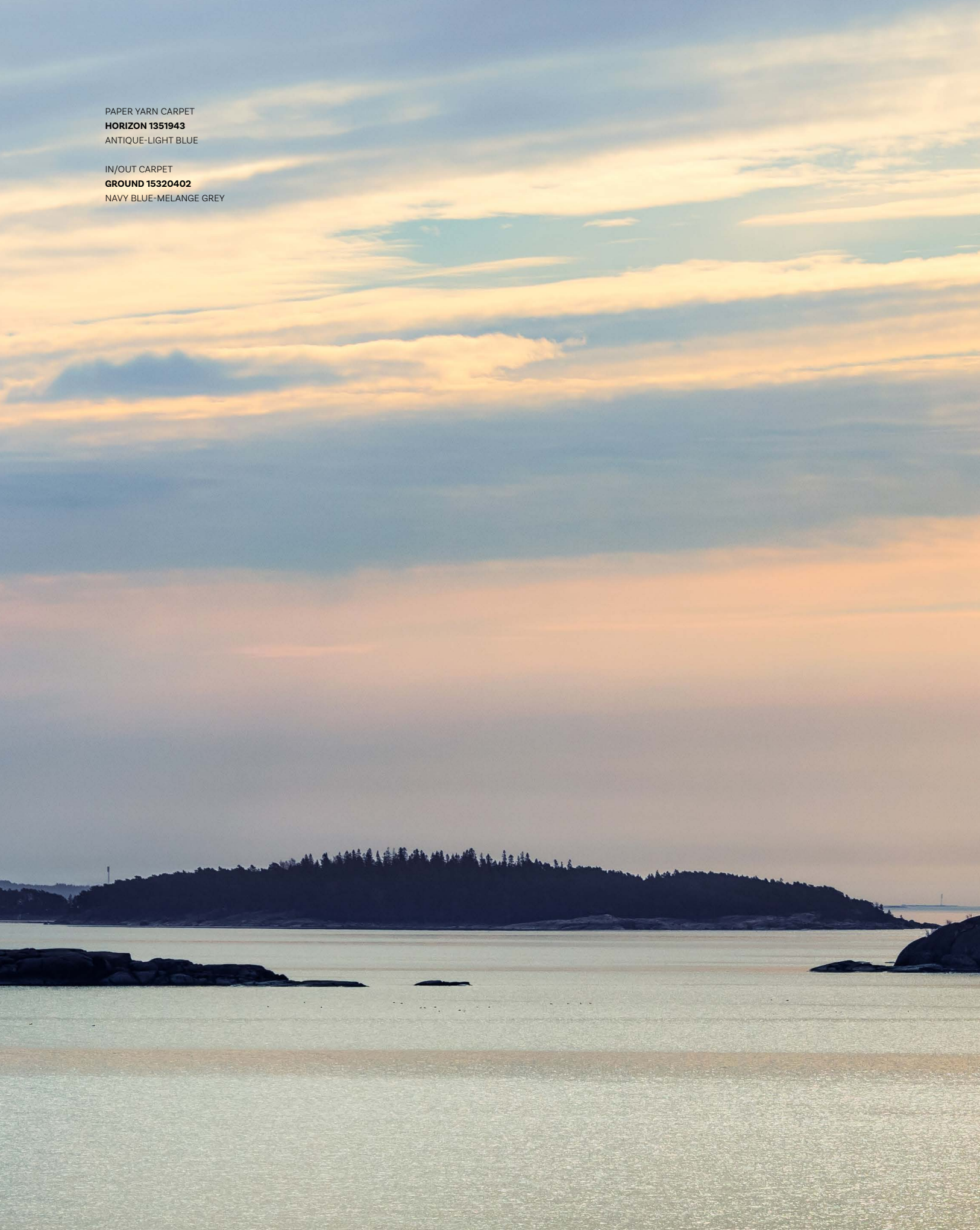
“It is important for us to preserve the roots of
Woodnotes and the craftsmanship
required for production in Finland.
We want to remain free.”

–Johanna Vuorio

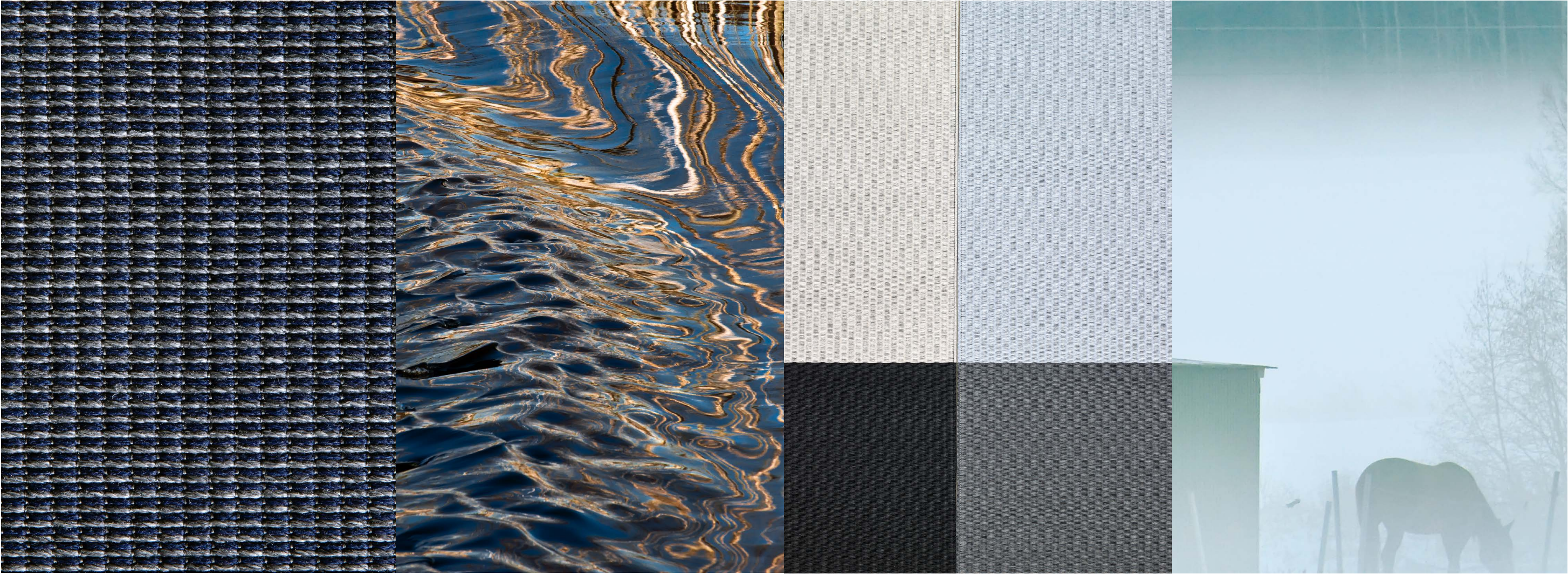


PAPER YARN CARPET
HORIZON 1351943
ANTIQUE-LIGHT BLUE

IN/OUT CARPET
GROUND 15320402
NAVY BLUE-MELANGE GREY



PAPER YARN CARPETS
SQUAREPLAY 1410915
BLACK-STONE
AND SQUAREPLAY 1414043
GRAPHITE-LIGHT BLUE



IN/OUT CARPET
GROUND 15320402
NAVY BLUE-MELANGE GREY

MANY STAGES OF CRAFTSMANSHIP

Behind each of our products are many handicraft stages, all of which, for paper products, are carried out in Lapua, Finland: spinning, dyeing, weaving, finishing and packaging. In today's world, making things by hand brings a rare warmth and value to products.

PAPER YARN CARPET
WILLOW 1261545
STONE-WILLOW BROWN



IN/OUT CARPET
GRAIN 15524003
GRAPHITE-SOFT BROWN



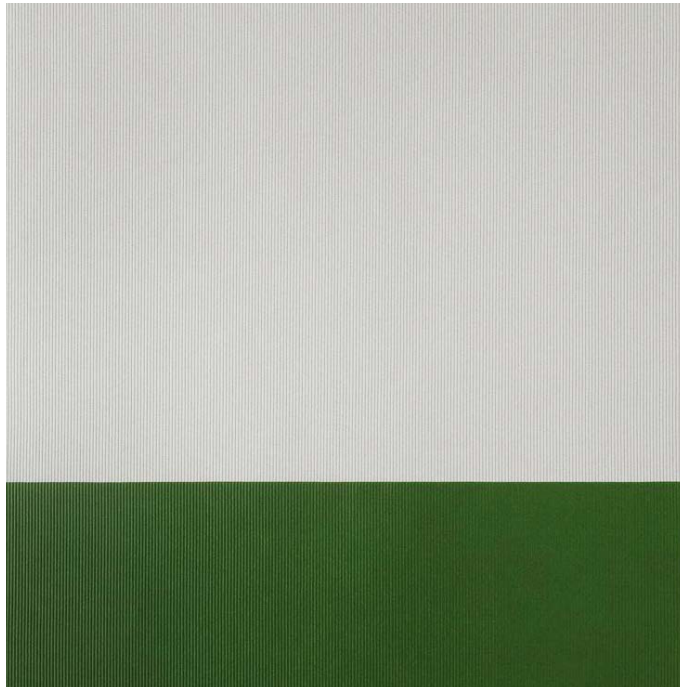
PAPER YARN CARPET
PANORAMA 1333220
 NUTRIA-ONYX



IN/OUT CARPET
BEACH 15380503
 LIGHT SAND-SOFT BROWN



IN/OUT CARPET
BEACH 15380508
LIGHT SAND-GRASS GREEN



"I have been working with paper yarn for 27 years. At first, we would hand-sew the ends of the carpets with a needle. Nowadays, we use a machine to sew the edges or use various finishing techniques to edge carpets. We do everything by hand: we cut carpets to size, we sew them freehand with a machine and we tie the fringes.



All the steps require precision; the edges need to be cut straight, the stitching and edging done carefully. Since paper yarn is a living material, you need to look at it from different angles to see which side you should approach it from. The skill of looking at a product from different angles is part of craftsmanship." –Irmeli Saarenpää



LOCAL ROOTS

"In Woodnotes' carpets, you can see the beautiful hues of the flat landscape of Finland's Ostrobothnia."

-Minna Ahokas



PAPER YARN CARPET
LINE 1244015
GRAPHITE-STONE



DEEPLY GROUNDED ENERGY

Localism, craftsmanship, and making things by hand from one person to another are important values to us. Additionally, at the core of Woodnotes is the idea of freedom. We want to stay closely connected to both our materials and our employees. Tranquility and passion should be felt in everything we do.

TUFTED WOOL LINEN CARPET
MAJORE 17270215226 OPAL



PRODUCTION DETERMINES QUALITY

Production is an extremely important part of the process for Woodnotes. Even a good product can be ruined with a bad finish. Our professionals have honed their methods and the result is always outstanding. The people in our production team work to try to find the best ways to fine-tune all the details, such as creating a particular finish, so they also play a key role in our product development. Together we come up with the best possible end result. You often need to make and test things in practice to see what works best. Our cooperation has always been excellent and both sides have a good understanding of each other.

ATELIER HAND WOVEN
COTTON PAPER YARN CARPET





IN/OUT CARPET
RIVER 15513405
YELLOW-LIGHT SAND

IN/OUT CARPET
BEACH 15380502
LIGHT SAND-MELANGE GREY



ATELIER HAND WOVEN
WOOL PAPER YARN CARPET
MINORE 5 17155001
STONE-WHITE

AT HOME IN THE WORLD

“Many of the paper yarn carpets made in our early days are still in use, 30 years later. They have been loved, they have seen and lived through all kinds of moments in life.

–Johanna Vuorio



PAPER YARN CARPETS
NEW YORK 1184530
 WILLOW BROWN-LIGHT GREY
COAST 1324302
 LIGHT BLUE-GREY



HAND KNOTTED
 WOOL CARPET
GRID 18600105
 WHITE-CAMEL



“Woodnotes products have been exhibited in many notable museums all over the world, and they have won a number of recognitions.” – Johanna Vuorio

TABLE
TWIGGY XL 46704W OAK
TWIGGY S 46700W OAK

HAND KNOTTED
WOOL CARPET
UNI 18500505 CAMEL



PAPER YARN CARPET
WILLOW 1260945
BLACK-WILLOW BROWN

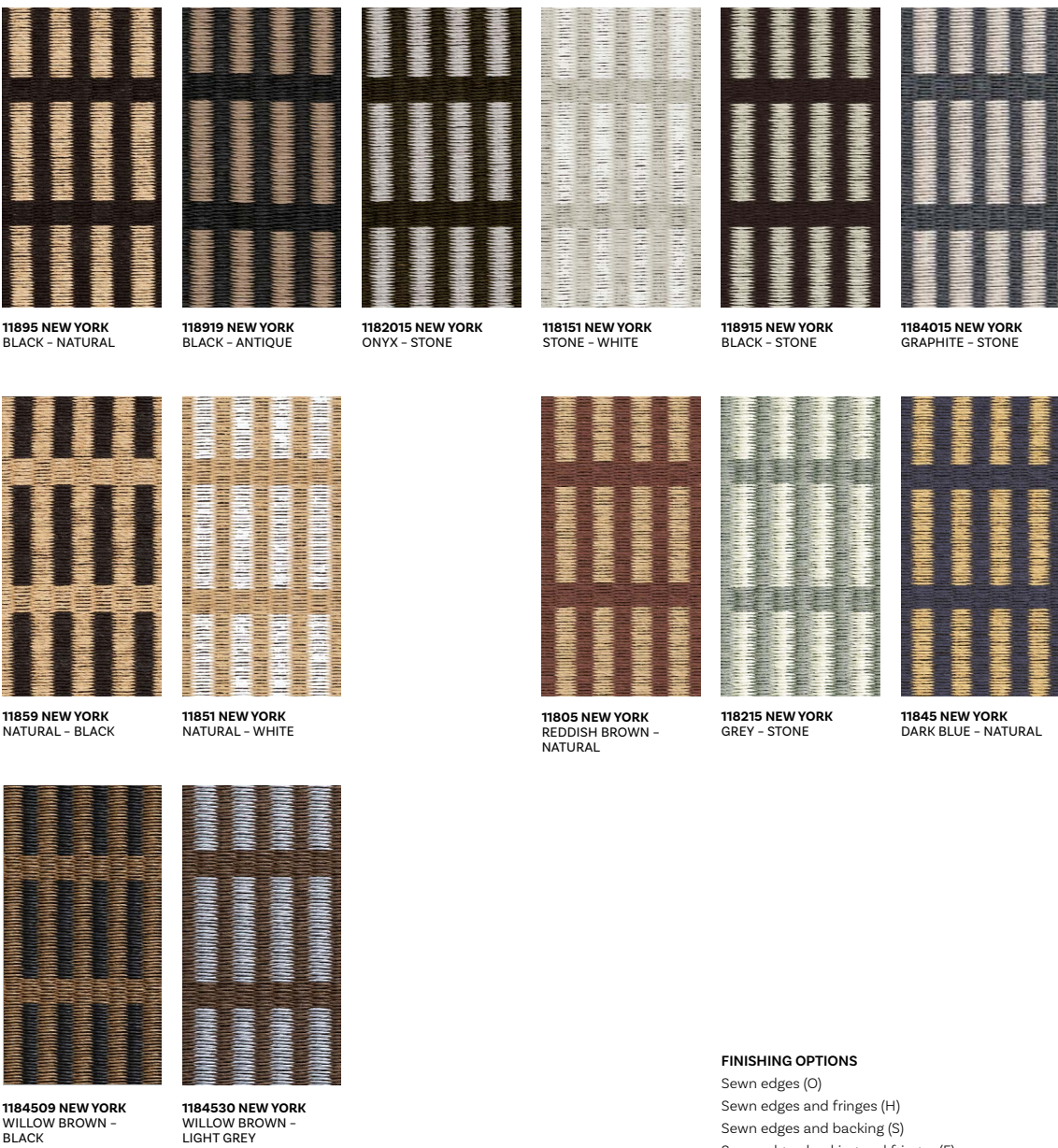
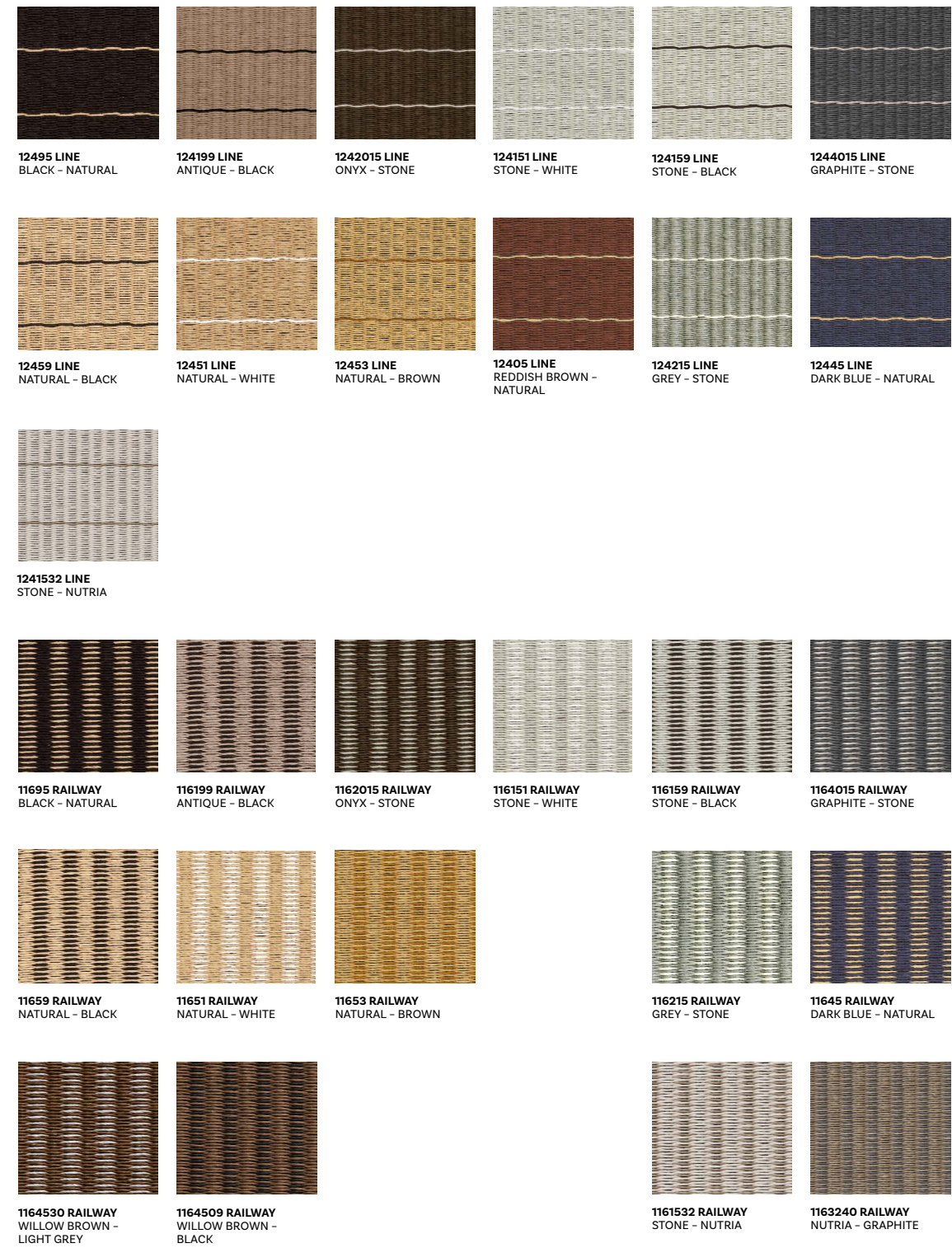
BEAUTY FINDS ITS PLACE EVERYWHERE

Our products fit just as well with Japanese minimalist aesthetics as with more abundant Italian or American styles. Our rugs create rhythm in a space, acting as a backdrop for the rest of the décor. Our products are loved worldwide, and it is always a great joy to see how they work in different spaces and interiors, bringing the entire setting to life.





INDEX

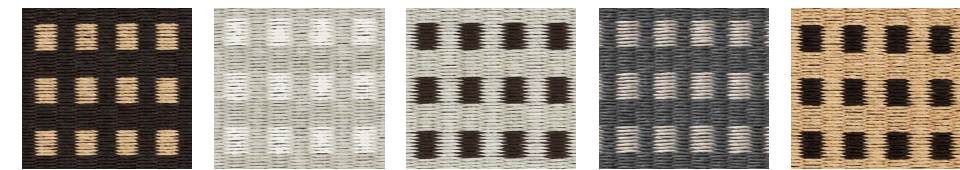


FINISHING OPTIONS

- Sewn edges (O)
- Sewn edges and fringes (H)
- Sewn edges and backing (S)
- Sewn edges, backing and fringes (F)
- Narrow edging and backing (P)
- Wide edging and backing (T)
- Wide edging (K)
- Sewn edges and wide edging ends (W)

COLOUR OPTIONS

The carpets can also be personalized. Colours can be matched to suit individual preferences.



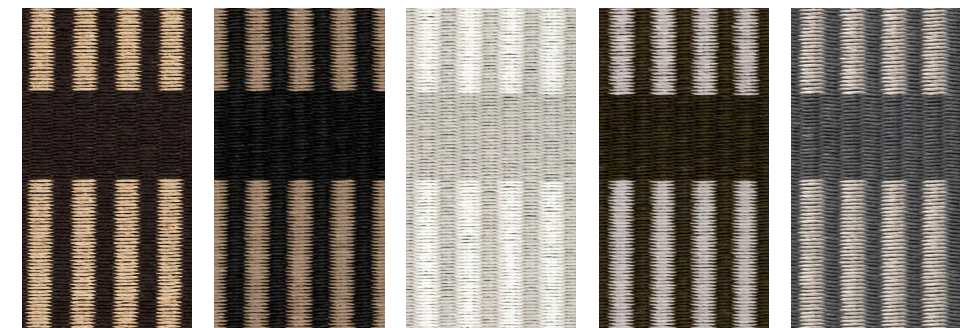
11795 CITY
BLACK - NATURAL

117151 CITY
STONE - WHITE

117159 CITY
STONE - BLACK

1174015 CITY
GRAPHITE - STONE

11759 CITY
NATURAL - BLACK



11595 CUT STRIPE
BLACK - NATURAL

115919 CUT STRIPE
BLACK - ANTIQUE

115151 CUT STRIPE
STONE - WHITE

115915 CUT STRIPE
BLACK - STONE

1154015 CUT STRIPE
GRAPHITE - STONE



1261545 WILLOW
STONE - WILLOW BROWN

1260545 WILLOW
NATURAL - WILLOW BROWN

1260945 WILLOW
BLACK - WILLOW BROWN

Woodnotes facts

-
100% of our paper yarn textile products are manufactured in Finland. The production chain of key paper yarn textiles - from paper yarn spinning to textile weaving, sewing, finishing and product packaging - is concentrated in nearby production sites in Kauhajärvi and Lapua: the distance between the weaving mill and the sewing shop is 26 km. The environmental impact of transport is thus kept to a minimum.



13251 COAST
NATURAL - WHITE

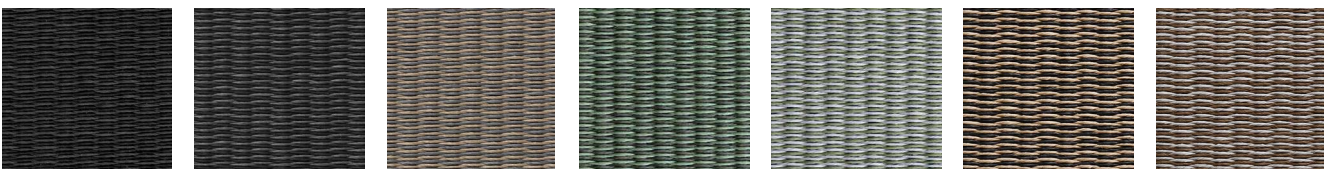
132151 COAST
STONE - WHITE

132215 COAST
GREY - STONE

1321519 COAST
STONE - ANTIQUE

1324030 COAST
GRAPHITE - LIGHT GREY

132132 COAST
DARK VIOLET - GREY



132920 COAST
BLACK - ONYX

1324009 COAST
GRAPHITE - BLACK

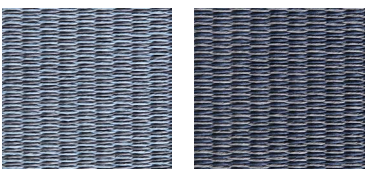
1323240 COAST
NUTRIA - GRAPHITE

1322720 COAST
ASPEN GREEN - ONYX

1322730 COAST
ASPEN GREEN - LIGHT GREY

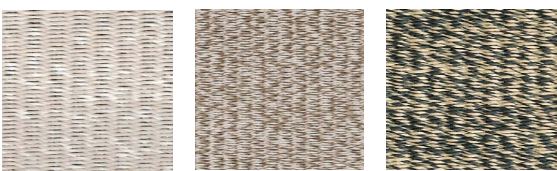
1323209 COAST
NUTRIA - BLACK

1324530 COAST
WILLOW BROWN - LIGHT GREY



1324302 COAST
LIGHT BLUE-GREY

1320430 COAST
DARK BLUE-LIGHT GREY



130151 LIVING
STONE - WHITE

1301532 LIVING
STONE - NUTRIA

13095 LIVING
BLACK - NATURAL



1311532 FIELD
STONE - NUTRIA

131159 FIELD
STONE - BLACK

1313215 FIELD
NUTRIA - STONE



125151 SUMMER RAIN
STONE - WHITE

1394009 MIDSUMMER
GRAPHITE - BLACK

FINISHING OPTIONS

- Sewn edges (O)
- Sewn edges and fringes (H)
- Sewn edges and backing (S)
- Sewn edges, backing and fringes (F)
- Narrow edging and backing (P)
- Wide edging and backing (T)
- Wide edging (K)
- Sewn edges and wide edging ends (W)

COLOUR OPTIONS

The carpets can also be personalized. Colours can be matched to suit individual preferences.

WOVEN PAPER YARN CARPETS



FINISHING OPTIONS

- Sewn edges (O)
- Sewn edges and fringes (H)
- Sewn edges and backing (S)
- Sewn edges, backing and fringes (F)
- Narrow edging and backing (P)
- Wide edging and backing (T)
- Wide edging (K)
- Sewn edges and wide edging ends (W)

COLOUR OPTIONS

The carpets can also be personalized. Colours can be matched to suit individual preferences.

WOVEN PAPER YARN CARPETS



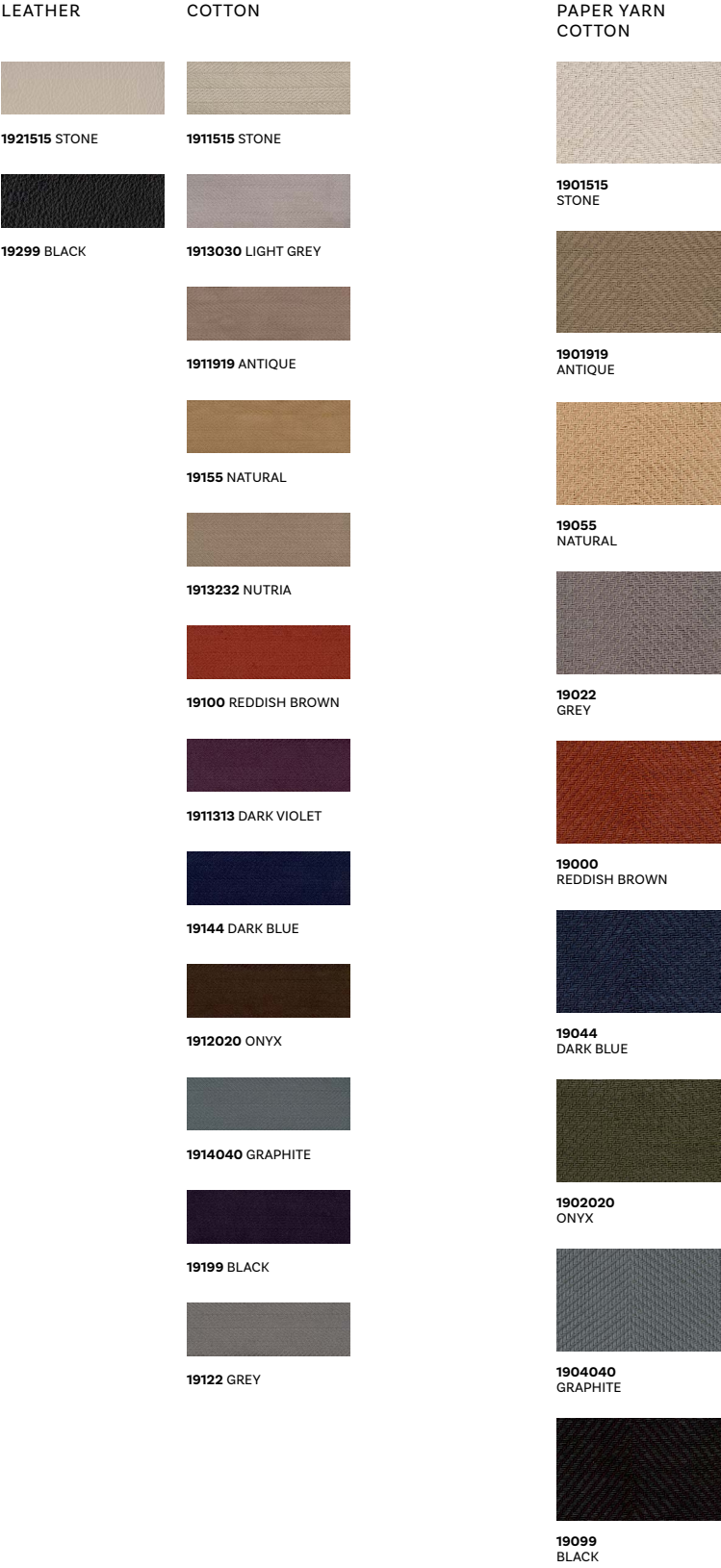


FINISHING OPTIONS

- Sewn edges (O)
- Sewn edges and fringes (H)
- Sewn edges and backing (S)
- Sewn edges, backing and fringes (F)
- Narrow edging and backing (P)
- Wide edging and backing (T)
- Wide edging (K)
- Sewn edges and wide edging ends (W)

COLOUR OPTIONS

The carpets can also be personalized. Colours can be matched to suit individual preferences.



WOVEN PAPER YARN CARPETS

SEWN EDGES (O)



Finishing: type O, sewn edges and turned ends
Designs: all paper yarn carpets (see pages 60–66)
Material: 86% paper yarn (weft), 14% cotton (warp)
Weight: approx. 1,9 kg/m²
Thickness: 6 mm
Suggested application: residential and light contract

Carpets are supplied to order. The maximum width is 250 cm and the maximum length 500 cm. Production tolerance ±2%. Carpets are supplied with soil-repellent treatment. The use of non-skid underlay is recommended. Slight weaving curve might occur in carpets without backing.
Design: Ritva Puotila

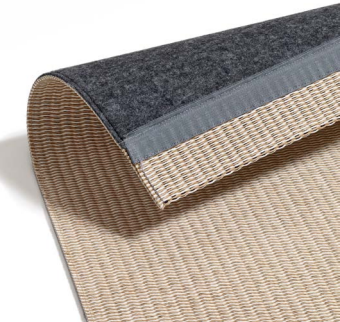
SEWN EDGES AND FRINGES (H)



Finishing: type H, sewn edges and fringes, length of fringes 9 cm
Designs: all paper yarn carpets (see pages 60–66)
Material: 86% paper yarn (weft), 14% cotton (warp)
Weight: approx. 1,9 kg/m²
Thickness: 6 mm
Suggested application: residential and light contract

Carpets are designed for reversible use and supplied to order. The maximum width is 250 cm and the maximum length 500 cm. Production tolerance ±2%. Carpets are supplied with soil-repellent treatment. The use of non-skid underlay is recommended. Slight weaving curve might occur in carpets without backing.
Design: Ritva Puotila

SEWN EDGES AND BACKING (S)



Finishing: type S, sewn edges and backing
Designs: all paper yarn carpets (see pages 60–66)
Material: 76% paper yarn (weft), 13% cotton (warp), 11% polyester felt (backing)
Backing: 90% recycled polyester, 10% special low-melt polyester
Weight: approx. 2,2 kg/m² (incl. backing)
Thickness: 6 mm with felt backing
Suggested application: residential and contract

Carpets are supplied to order. The maximum width is 335 cm and the maximum length 1000 cm. Production tolerance ±2%. Carpets are supplied with soil-repellent treatment.
Design: Ritva Puotila

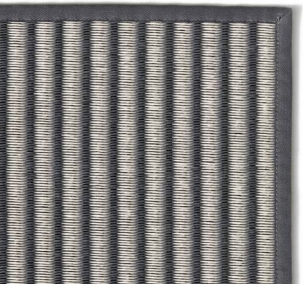
SEWN EDGES, BACKING AND FRINGES (F)



Finishing: type F, sewn edges, backing and fringes, length of fringes 9 cm
Designs: all paper yarn carpets (see pages 60–66)
Material: 76% paper yarn (weft), 13% cotton (warp), 11% polyester felt (backing)
Backing: 90% recycled polyester, 10% special low-melt polyester
Weight: approx. 2,2 kg/m² (incl. backing)
Thickness: 6 mm with felt backing
Suggested application: residential and contract

Carpets are supplied to order. The maximum width is 335 cm and the maximum length 1000 cm. Production tolerance ±2%. Carpets are supplied with soil-repellent treatment.
Design: Ritva Puotila

NARROW EDGING AND BACKING (P)



Finishing: type P, bound around the edges with 1 cm wide cotton border
Designs: all paper yarn carpets (see pages 60–66)
Material: 76% paper yarn (weft), 13% cotton (warp), 11% polyester felt (backing)
Backing: 90% recycled polyester, 10% special low-melt polyester
Weight: approx. 2,2 kg/m² (incl. backing)
Thickness: 6 mm with felt backing
Suggested application: residential and contract

Carpets are supplied to order. The maximum width is 335 cm and the maximum length 1000 cm. Production tolerance ±2%. Carpets are supplied with soil-repellent treatment. Round carpets are also available in this quality.
Design: Ritva Puotila

WIDE EDGING AND BACKING (T)



Finishing: type T, bound around the edges with 6 cm wide paper yarn cotton border
Designs: all paper yarn carpets (see pages 60–66)
Material: 76% paper yarn (weft), 13% cotton (warp), 11% polyester felt (backing)
Backing: 90% recycled polyester, 10% special low-melt polyester
Weight: approx. 2,2 kg/m² (incl. backing)
Thickness: 6 mm with felt backing, 12 mm corners
Suggested application: residential and contract

Carpets are supplied to order. The maximum width is 335 cm and the maximum length 1000 cm. Production tolerance ±2%. Carpets are supplied with soil-repellent treatment.
Design: Ritva Puotila

WIDE EDGING (K)



Finishing: type K, bound around the edges with 6 cm wide paper yarn cotton border
Designs: all paper yarn carpets (see pages 60–66)
Material: 86% paper yarn (weft), 14% cotton (warp)
Weight: approx. 1,9 kg/m²
Thickness: 6 mm, 12 mm corners
Suggested application: residential and light contract

Carpets with paper yarn cotton edging are designed for reversible use and supplied to order. The maximum width is 335 cm and the maximum length 1000 cm. Production tolerance ±2%. Carpets are supplied with soil-repellent treatment on both sides. The use of nonskid underlay is recommended. Slight weaving curve might occur in carpets without backing.
Design: Ritva Puotila

SEWN EDGES AND WIDE EDGING ENDS (W)



Finishing: type W, sewn edges and wide edging ends with 6 cm wide paper yarn cotton edging
Designs: All paper yarn carpets (see pages 60–66)
Material: 86% paper yarn (weft), 14% cotton (warp)
Weight: approx. 1,9 kg/m²
Thickness: 6 mm
Suggested application: residential and light contract

Carpets with sewn edges and wide edging ends are designed for reversible use and supplied to order. The maximum width is 250 cm and the maximum length 500 cm. Production tolerance ±2%. Carpets are supplied with soil-repellent treatment on both sides. The use of non-skid underlay is recommended. Slight weaving curve might occur in carpets without backing.
Design: Ritva Puotila

NON-SKID UNDERLAY

NON-SKID UNDERLAY



Material: 25% polyolefin with 75% natural latex
Suggested application: recommended for carpets without backing

Our non-skid underlay increases comfort and extends the life of your carpet. It is suited for all types of floors: wood, laminate, ceramic, marble, cork etc. and is exceptionally well suited for floors with underfloor heating. The non-skid underlay is delivered according to the size of the rug (maximum width 290 cm). The underlay is light-weight and easy to cut into the desired shapes and sizes.

The use of non-skid underlay is recommended for carpets without backing. Slight weaving curve might occur in carpets without backing.

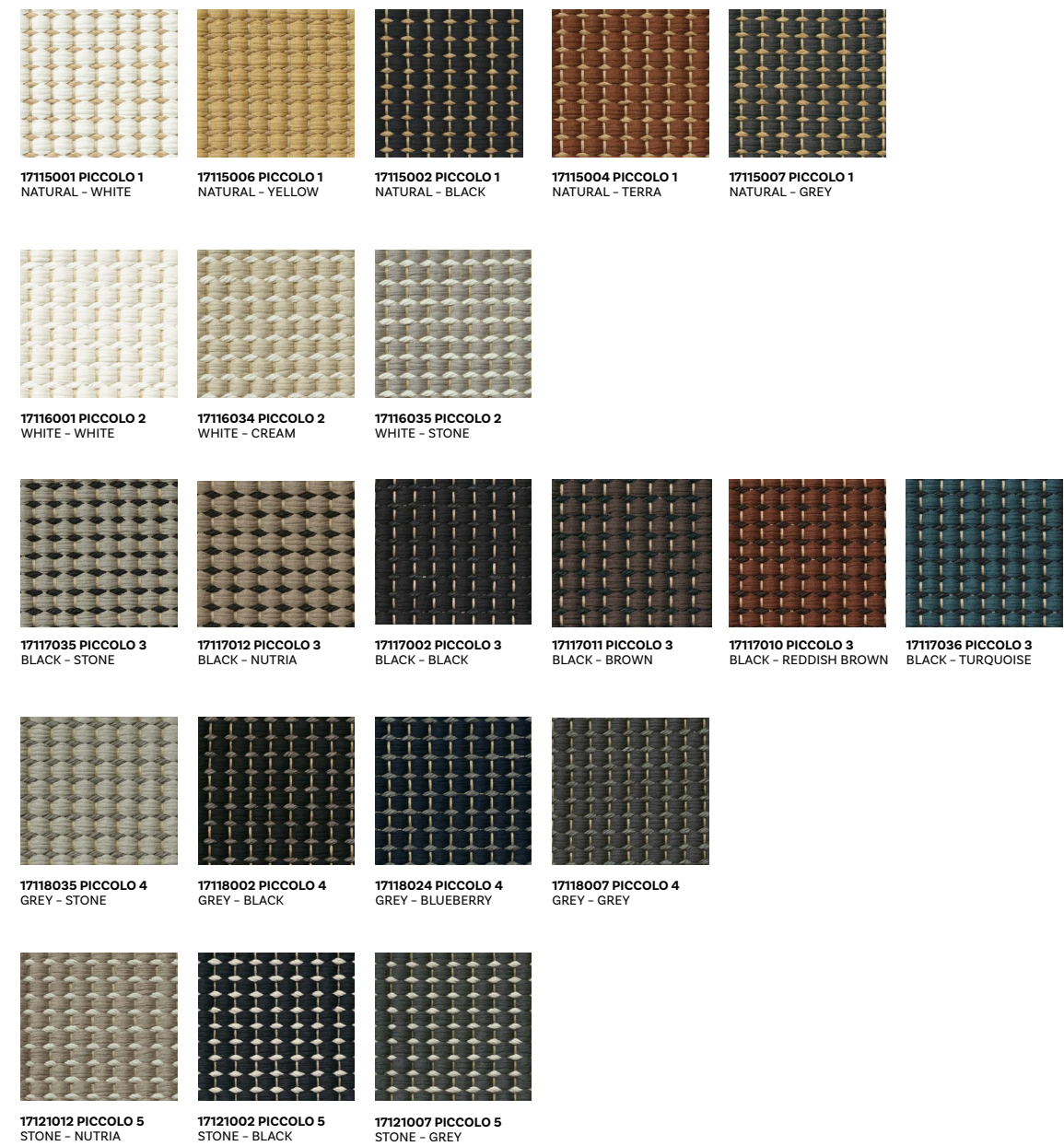
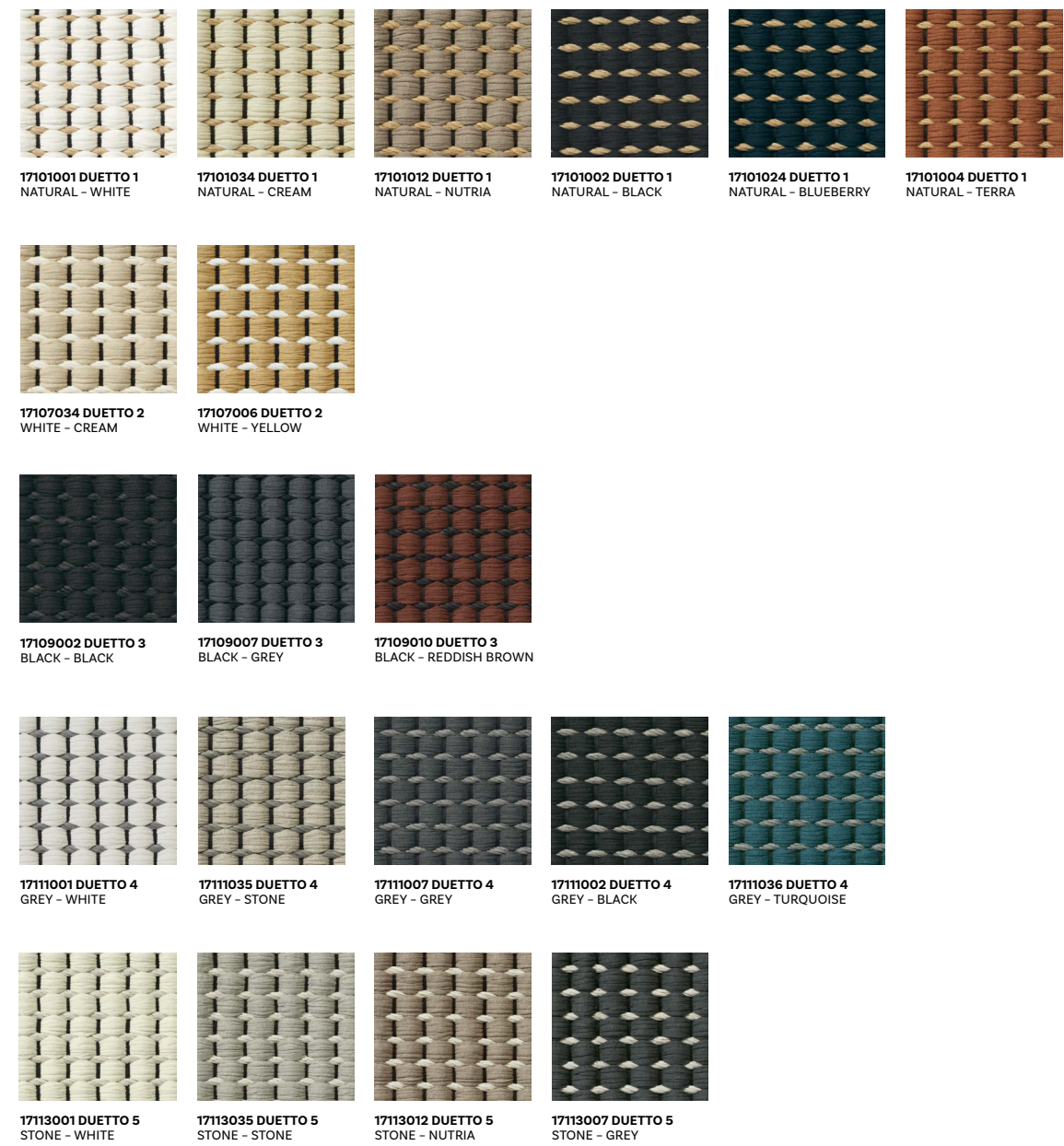
Woodnotes facts

- The strength and durability of paper yarn derive directly from wood fibre. The compactness of the wood fibres means that paper yarn does not gather dust or dirt, an important feature particularly for those allergic to dust. Woodnotes carpets tolerate humid conditions well.

PAPER YARN CARPET
LINE 1241532 STONE-NUTRIA



The colour of paper yarn changes over the years, just as colours change in nature – just as plants wilt, fade and dry. Such change is naturally beautiful and acceptable. The change reflects the DNA of the wood that remains in the paper yarn.

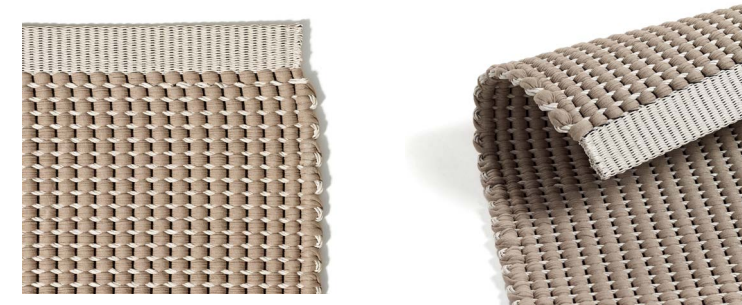


The number after the name indicates
the colour of the paper yarn.

Duetto/Piccolo 1: Natural
Duetto/Piccolo 2: White
Duetto/Piccolo 3: Black
Duetto/Piccolo 4: Grey
Duetto/Piccolo 5: Stone

ATELIER WOVEN COTTON PAPER YARN CARPETS

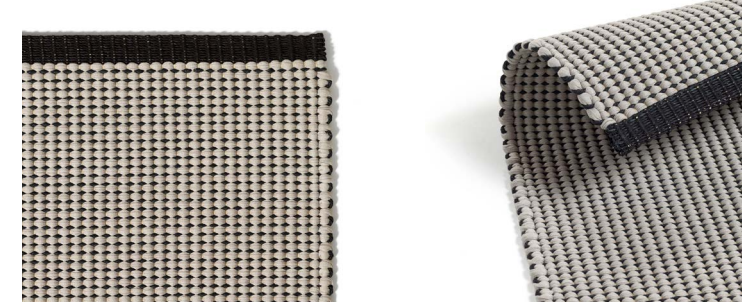
DUETTO



Finishing: woven turned paper yarn ends, 5 cm wide
Design: Duetto (see page 72)
Production method: hand woven
Material: 74% organic cotton, 26% paper yarn
Weight: 3,4 kg/m²
Thickness: 12-15 mm
Suggested applications: residential and light contract

Carpets are designed for reversible use and supplied to order. The available width is 70 to 260 cm, the maximum length is 1000 cm, size tolerance ±3%. Materials are supplied with soil-repellent treatment. Thanks to the smooth surface and dust repellent materials, an excellent rug for allergic homes. The use of non-skid underlay is recommended.
Design: Hanna Korvela

PICCOLO

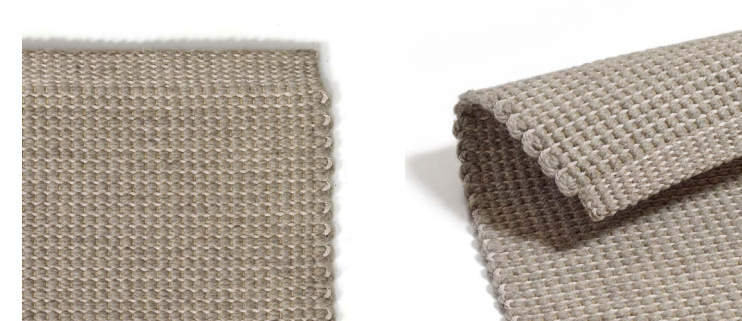


Finishing: woven turned paper yarn ends, 3 cm wide
Design: Piccolo (see page 73)
Production method: hand woven
Material: 68% organic cotton, 32% paper yarn
Weight: 2,6 kg/m²
Thickness: 9-12 mm
Suggested applications: residential and light contract

Carpets are designed for reversible use and supplied to order. The available width is 70 to 340 cm, the maximum length is 1000 cm, size tolerance ±3%. Materials are supplied with soil-repellent treatment. Thanks to the smooth surface and dust repellent materials, an excellent rug for allergic homes. The use of non-skid underlay is recommended.
Design: Hanna Korvela

ATELIER WOVEN WOOL PAPER YARN CARPETS

MINORE



Finishing: woven turned wool-paper yarn ends, 4 cm wide
Design: Minore
Production method: hand woven
Material: 64% wool, 27% paper yarn, 9% cotton (warp)
Weight: approx. 2,2 kg/m²
Thickness: 10 mm
Suggested applications: residential and light contract

Minore carpets are designed for reversible use, and they are supplied to order. The available width is 70 to 330 cm, the maximum length is 1000 cm, size tolerance ±3%. The colours are natural sheep wool colours that have not been chemically dyed. Thanks to the smooth surface and dust repellent materials, an excellent rug for allergic homes. The use of non-skid underlay is recommended.
Design: Hanna Korvela

The number after the name indicates the colour of the paper yarn.

Minore 1: Natural
Minore 3: Black
Minore 4: Grey
Minore 5: Stone



17151001 MINORE 1 NATURAL - WHITE
17151030 MINORE 1 NATURAL - NATURAL BEIGE
17153030 MINORE 3 BLACK - NATURAL BEIGE
17153040 MINORE 3 BLACK - GREYISH BROWN
17154040 MINORE 4 GREY - GREYISH BROWN
17155001 MINORE 5 STONE - WHITE
17155030 MINORE 5 STONE - NATURAL BEIGE



ATELIER WOVEN
COTTON PAPER YARN CARPET
PICCOLO 1 17115002
NATURAL-BLACK

SEWN EDGES AND ENDS WITH EDGING (U)



Finishing type: U, sewn edges and ends with narrow edging (2,5 cm).
Designs: all In/Outdoor carpets (see page 77)
Material: 100% polypropylene
Weight: approx. 1,5 kg/m²
Thickness: 4 mm
Suggested application: residential and light contract outdoor and indoor

Carpets are supplied to order. The maximum width is 300 cm and the maximum length 1000 cm. Production tolerance: ±2%. Carpets with sewn edges and ends with narrow edging are designed for reversible use. The use of non-skid underlay is recommended for carpets without backing. Slight weaving curve might occur in carpets without backing.
Design: Woodnotes design team

SEWN EDGES, BACKING AND ENDS WITH EDGING (S)



Finishing: type S, sewn edges, backing and ends with narrow edging (2,5 cm).
Designs: all In/Outdoor carpets (see page 77)
Material: 84% polypropylene, 16% polyester (backing)
Weight: approx. 1,7 kg/m²
Thickness: 6 mm
Suggested application: residential and light contract indoor

Carpets are supplied to order. The maximum width is 300 cm and the maximum length 1000 cm. Production tolerance ±2%.
Design: Woodnotes design team

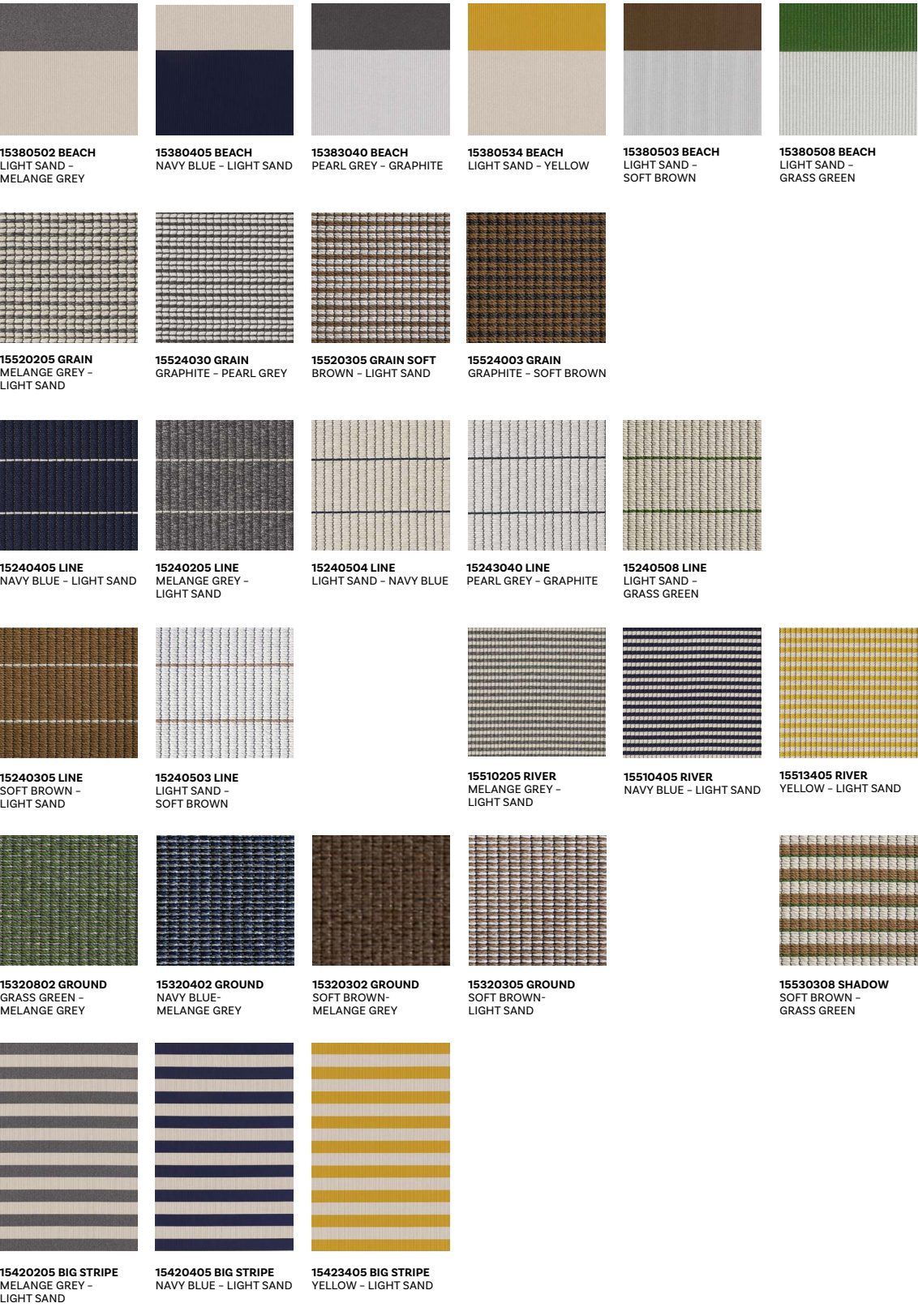
FINISHING OPTIONS

Sewn edges and ends with narrow edging (U).
Sewn edges, backing and ends with edging (S).
Please note that the colours are reversed on the other side of the Beach and Big Stripe carpets (finishing U).

IN/OUT PLAY/UNICOLOUR COLOUR CHART



EDGING



HAND KNOTTED WOOL CARPETS

UNI



Design: Uni
Production method: hand knotted
Material: 90% pure wool (pile and weft), 10% cotton (warp)
Thickness: 20 mm (pile height 15 mm)
Weight: 3,7 kg/m²
Sizes: 140x200, 170x240, 200x300, 250x350 cm

Special sizes available on request. The maximum width is 350 cm and the maximum length 1000 cm. Production tolerance: ±5-10 cm. The colour palette is soft earthy, the colours are natural sheep wool colours (except black) that have not been chemically dyed. The wool is mulesing-free wool from New Zealand. Each corner is decorated with a braided wool fringe, which is reminiscent of craftsmanship. The braids can be removed if desired.

Design: Woodnotes design team

GRID



Design: Grid
Production method: hand knotted
Material: 90% pure wool (pile and weft), 10% cotton (warp)
Thickness: 20 mm (pile height 15 mm)
Weight: 3,7 kg/m²
Sizes: 140x200, 170x240, 200x300, 250x350 cm

Special sizes available on request. The maximum width is 350 cm and the maximum length 1000 cm. Production tolerance: ±5-10 cm. The colour palette is soft earthy, the colours are natural sheep wool colours (except black) that have not been chemically dyed. The wool is mulesing-free wool from New Zealand. Each corner is decorated with a braided wool fringe, which is reminiscent of craftsmanship. The braids can be removed if desired.

Design: Woodnotes design team



18500115 UNI
IVORY WHITE

18503030 UNI
LIGHT GREY

18500202 UNI
GREY

18500505 UNI
CAMEL



18600130 GRID
WHITE - LIGHT GREY

18600102 GRID
WHITE - GREY

18600109 GRID
WHITE - BLACK

18600105 GRID
WHITE - CAMEL

TUFTED WOOL LINEN CARPETS

Woodnotes facts

The hand knotted wool rugs are woven while preserving the original colour of the sheep's wool. Only the black wool yarn has to be dyed.

UNI 18500505
CAMEL

MAJORE



Design: Majore
Material: 80% pure wool, 20% linen
Material (backing): polyester
Production method: tufted
Pile height: 25/15 mm (loop pile)
Pile weight: 2,3 kg/m²
Suggested application: residential and contract

Carpets are supplied to order. The maximum width is 400 cm and the maximum length 900 cm. Production tolerance ±2 cm. Round carpets are also available in this quality.* Colour Quartz is treated to be soil-repellent.

Design: Hanna Korvela



17270101101 MAJORE
QUARTZ*

17270215226 MAJORE
OPAL

17270202215 MAJORE
LIGHT BROWN

17270202217 MAJORE
BROWN

17270104204 MAJORE
OBSIDIAN

17270104207 MAJORE
BLACK

SAMMAL



Design: Sammal
Material: 68% pure new wool, 32% linen
Material (backing): polyester and cotton
Production method: tufted
Pile height: 25 mm
Pile weight: 2,5 kg/m²
Suggested application: residential and light contract

Carpets are supplied to order. The maximum width is 500 cm and maximum length 890 cm. Production tolerance ±2%. Round carpets are possible. For other shapes, please ask.
Design: Ritva Puotila

AAPA



Design: Aapa
Material: 60% wool (hard twist), 40% linen
Material (backing): polyester and cotton
Production method: tufted
Pile height: 25/35 mm (stripes)
Pile weight: 2,7 kg/m²
Suggested application: residential and light contract

Carpets are supplied to order. The maximum width is 500 cm and maximum length 890 cm. Production tolerance ±2%. Round carpets are possible. For other shapes, please ask.
Design: Ritva Puotila

PATH



Design: Path
Material: 55% pure wool, 45% linen
Material (backing): polyester and cotton
Production method: tufted
Pile height: 14 mm (pile), 10 mm (loop)
Pile weight: 2,7 kg/m²
Suggested application: residential and light contract

Carpets are supplied to order. The maximum width is 500 cm and maximum length 890 cm. Production tolerance ±2%. Round carpets are possible. For other shapes, please ask.
Design: Ritva Puotila

WILD



Design: Wild
Material: 70% linen, 30% pure wool
Material (backing): polyester and cotton
Production method: tufted
Pile height: 35 mm
Pile weight: 3,5 kg/m²
Suggested application: residential and light contract

Carpets are supplied to order. The maximum width is 500 cm and maximum length 890 cm. Production tolerance ±2%. Round carpets are possible. For other shapes, please ask.
Design: Ritva Puotila

TUNDRA



Design: Tundra
Material: 70% linen, 30% pure wool
Production method: tufted
Loop height: 12 mm
Pile weight: 2,5 kg/m²
Suggested application: residential and light contract

Carpets are supplied to order. The maximum width is 500 cm and maximum length 890 cm. Production tolerance ±2%. Round carpets are possible. For other shapes, please ask.
Design: Ritva Puotila



1610101 SAMMAL
WHITE



1612222 SAMMAL
ICE



1610505 SAMMAL
SAND



1613001 SAMMAL
LIGHT GREY



1620101 AAPA
WHITE



1621515 AAPA
STONE



1620505 AAPA
SAND



1620202 AAPA
WARM GREY



1630101 PATH
WHITE



1631501 PATH
LIGHT GREY



1640115 WILD
LIGHT GREY



1640202 WILD
GREY

Woodnotes facts

-

The wool used for the tufted carpets is from New Zealand but dyed in the EU. It is mulesing-free.



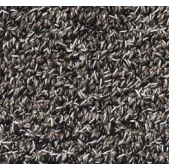
1651501 TUNDRA
STONE - WHITE



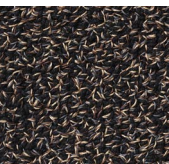
1650109 TUNDRA
WHITE - BLACK



1650901 TUNDRA
BLACK - WHITE



1650201 TUNDRA
GREY - WHITE



1650905 TUNDRA
BLACK - NATURAL

BLINDS AND PANELS



ROLLER
BLIND WITH
CHAIN (D)

Mechanism: D, chain operated roller blind (Silent Gliss)
Fabrics: Morning, Open Sky, Vista and Cloud (see page 85)
Suggested application: residential and contract

Silent and smooth roller blind. Metal bead chain with right or left operation. Mechanism available in white or black. Parallel blinds can be installed side by side with centre support bracket and minimal light gap. Continuous headrail helps with installation.

Sizes: Blinds are produced according to customer specifications and supplied ready-made with installation kit. Max. width 200 cm. Production tolerance $\pm 0,5\%$.



FOLDING
BLIND WITH
CHAIN (E)

Mechanism: E, chain operated folding blind (Silent Gliss)
Fabrics: Morning, Open Sky, Vista and Cloud (see page 85)
Suggested application: residential and contract

Easy operating and smooth folding blind. Wind-up mechanism hidden in a cassette. Metal bead chain with right or left operation.

Sizes: Blinds are produced according to customer specifications and supplied ready-made with an installation kit. Max. width 200 cm. Production tolerance $\pm 0,5\%$.



FOLDING
BLIND (C)

Mechanism: C, string operated folding blind
Fabrics: Morning, Open Sky, Vista and Cloud (see page 85)
Suggested application: residential

Smoothly translucent string operated folding blind. Mechanism with right or left operation. The blind is supplied with a metal wall knob for fixing the strings.

Sizes: Blinds are produced according to customer specifications and supplied ready-made with an installation kit. Max. width 200 cm. Production tolerance $\pm 0,5\%$.



CLASSIC
ROLLER
BLIND (B)

Mechanism: B, string operated roller blind
Fabrics: Morning, Open Sky, Vista and Cloud (see page 85)
Suggested application: residential

Smoothly translucent string operated roller blind. Mechanism with right or left operation. Blind is supplied with a metal wall knob for fixing the strings.

Sizes: Blinds are produced according to customer specifications and supplied ready-made with installation kit. Max. width 200 cm. Production tolerance $\pm 0,5\%$.



PANEL (G)

Mechanism: G, panel for panel glide system (Silent Gliss)
Fabrics: Morning, Open Sky, Vista and Cloud (see page 85)
Suggested application: residential and contract

Fabrics with varying degrees of translucency available for panels. Panels are suited especially well for high spaces. Velcro band at the top and a flat metal weight at the bottom. Mechanism supplied to order.

Sizes: Panels are produced according to customer specifications and supplied as ready-made elements. Max. width 150 cm. Production tolerance $\pm 0,5\%$.



CLASSIC ROLLER
BLIND WITH STRINGS
MORNING 21115
WHITE-NATURAL

Woodnotes facts

There is no waste from blinds made from our paper-cotton blind fabrics. Blinds of different widths can be cut from the fabric in parallel, and any scrap material can be used for sample pieces or made into table textiles.

CHAIN OPERATED
ROLLER BLIND
MORNING 21111
WHITE FABRIC

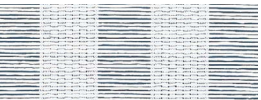
Woodnotes facts

-
The dyes and dirt-repellent substances of our fabrics comply with the EU REACH Regulation for chemicals: they are environmentally friendly and do not endanger health.

BLIND AND PANEL FABRICS



21311 VISTA WHITE



21211 OPEN SKY WHITE



21111 MORNING WHITE



2140101 CLOUD WHITE



21315 VISTA WHITE - NATURAL



21215 OPEN SKY WHITE - NATURAL



21115 MORNING WHITE - NATURAL



2140105 CLOUD WHITE - NATURAL



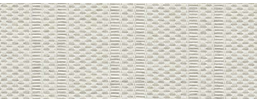
213115 VISTA WHITE - STONE



212115 OPEN SKY WHITE - STONE



211115 MORNING WHITE - STONE



2140115 CLOUD WHITE - STONE



21395 VISTA BLACK - NATURAL



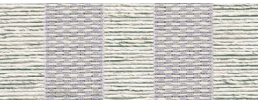
21221 OPEN SKY SILVER - WHITE



21121 MORNING SILVER - WHITE



21399 VISTA BLACK



212215 OPEN SKY SILVER - STONE



211215 MORNING SILVER - STONE



2124040 OPEN SKY GRAPHITE



21195 MORNING BLACK - NATURAL



2124009 OPEN SKY GRAPHITE - BLACK



211915 MORNING BLACK - STONE



21199 MORNING BLACK

MORNING, OPEN SKY, VISTA AND CLOUD

Blind fabrics allow a delicate and soft light to pass through.

Design: Ritva Puotila

MATERIAL COMPOSITIONS

Morning: 80% paper yarn, 20% cotton
Open Sky: 83% paper yarn, 17% cotton
Vista: 81% paper yarn, 19% cotton
Cloud: 82% paper yarn, 18% cotton

WEIGHT

Morning: 610 g/m²
Open Sky: 450 g/m²
Vista: 410 g/m²
Cloud: 485 g/m²

FABRIC WIDTH

200 cm

SWIVEL K CHAIR



The swivel k chair has a matt chromed base plate equipped with a rotating and rocking mechanism. Tubular frame on seat. Removable upholstery in fabric or leather. The frame consists of four removable parts.

46005 WIDE SWIVEL k CHAIR 89x86x97/41 cm
46006 extra cover for large swivel k chair

Fabrics: Sand, Das and leather
Design: Harri Koskinen

NARROW SWIVEL K CHAIR AND K OTTOMAN



The narrow swivel k chair has a matt chromed or matt-black base plate equipped with a rotating and rocking mechanism. Tubular frame on seat. Removable upholstery in fabric or leather. The frame consists of four removable parts.

46007 NARROW SWIVEL k CHAIR 72x86x97/41 cm
46008 extra cover for narrow swivel k chair
46017 NARROW k OTTOMAN with plate 72x53x43 cm

Fabrics: Sand, Das and leather
Design: Harri Koskinen

SWIVEL K CHAIR WITH ARMRESTS



A luxurious lounge chair with armrests. Combine it with k ottoman for extra comfort. The chair has a matt chromed or matt-black base plate equipped with a rotating and rocking mechanism. Tubular frame on seat, plywood frame on armrests. Removable upholstery.

46009 SWIVEL k CHAIR WITH ARMRESTS 88x86x97/41 cm

Fabrics: Sand, Das and leather
Design: Harri Koskinen

K CHAIR AND WIDE K OTTOMAN



The k chair has a metal matt chromed or matt-black tubular frame and a removable upholstery. The frame consists of three removable parts, which makes it possible to ship the item in an economical package.

46001 WIDE k CHAIR 89x86x97/41 cm
46002 extra cover for large k chair
46011 WIDE k OTTOMAN tubular 89x53x43 cm

Fabrics: Sand and Das
Design: Harri Koskinen

NARROW K CHAIR AND NARROW K OTTOMAN



The narrow k chair has a metal matt chromed or matt-black tubular frame and a removable upholstery. The frame consists of three removable parts, which makes it possible to ship the item in an economical package.

46003 NARROW k CHAIR 72x86x97/41 cm
46004 extra cover for narrow k chair
446013 NARROW k OTTOMAN tubular 72x53x43 cm

Fabrics: Sand and Das
Design: Harri Koskinen

SWIVEL K CHAIR WITH STAR BASE



The versatile swivel k chair with a lighter matt chromed or matt-black star base. The star based k chair is part of a natural continuum with its two predecessors, combining their lightness, rotation and the pleasant rocking mechanism. The k ottoman turns the k chair into a comfortable lounge chair.

46025 WIDE SWIVEL k CHAIR 89x86x97/41 cm
46006 extra cover for large swivel k chair

Fabrics: Sand, Das and leather
Design: Harri Koskinen

NARROW SWIVEL K CHAIR AND K OTTOMAN WITH STAR BASE



The versatile swivel k chair with a lighter matt chromed or matt-black star base. The star based k chair is part of a natural continuum with its two predecessors, combining their lightness, rotation and the pleasant rocking mechanism. The k ottoman turns the k chair into a comfortable lounge chair.

46027 NARROW SWIVEL k CHAIR 72x86x97/41 cm
46008 extra cover for narrow swivel k chair
46037 NARROW k OTTOMAN with star base 72x53x43 cm

Fabrics: Sand, Das and leather
Design: Harri Koskinen

SWIVEL K CHAIR WITH ARMRESTS AND STAR BASE



The versatile swivel k chair with comfortable armrests and a lighter star base. The tubular frame is matt chromed or matt-black.

46029 SWIVEL k CHAIR WITH ARMRESTS 88x86x97/41 cm

Fabrics: Sand, Das and leather
Design: Harri Koskinen

Sand and Das fabric specifications and colour charts: see page 92.

Woodnotes facts

-
The metal-framed furniture is extremely durable, and parts that wear can be repaired or replaced.



Woodnotes facts

–
Certified European oak and ash have been used in the wood furniture. They absorb carbon throughout their life cycle and proper maintenance will make them last almost forever.

K CHAIR 20TH ANNIVERSARY NARROW SWIVEL K CHAIR 46007



The first version of the k chair was launched in 2004. To celebrate its anniversary, the k lounge chair is now available in three new colour options. The colours are inspired by the urban environment of Helsinki: Concrete, Brick and Park. In the anniversary colour versions, the chairs are monochromatic, and the colours emphasize the chair as a whole, they emphasize a certain objectivity, iconicity. The colours of the jubilee year are available for the Narrow Swivel k chair with a base plate (product 46007).

Fabric: Ateljé

There upholstery comes in three colour options: PARK (green Ateljé 857), / BRICK (brown Ateljé 251) and CONCRETE (grey Ateljé 843).

Material: Easy Care fabric 65% PES, 24% PAN, 11% CV
Weight: 435 g / m²
Martindale: 60 000 cycles



843 ATELJÉ CONCRETE



857 ATELJÉ PARK



251 ATELJÉ BRICK

SIRO



A multipurpose chair that can be used as a dining chair, but also as a bedside table, bench or side chair. It is made of oak and lacquered or stained black. You can choose between a wooden or a fabric or leather upholstered seat.

4400 SIRO oak	44,5x52,5x78,5/45 cm
4410 SIRO oak upholstered	44,5x52,5x78,5/46,5
4409 SIRO black	44,5x52,5x78,5/45
4419 SIRO black upholstered	44,5x52,5x78,5/46,5

Design: Ilkka Suppanen and Raffaella Mangiarotti

SIRO WITH ARMRESTS



The Siro chair with armrests is a dining chair made of oak and lacquered or stained black. The armrest is bent metal covered with leather that curves around the chair, creating a beautiful and slender look. You can choose between a wooden or a fabric or leather upholstered seat.

4450 SIRO oak with armrests	59x52,5x78,5/45 cm
4460 SIRO oak with armrests upholstered	59x52,5x78,5/46,5
4459 SIRO black with armrests	59x52,5x78,5/45
4469 SIRO black with armrests upholstered	59x52,5x78,5/46,5

Design: Ilkka Suppanen and Raffaella Mangiarotti

SIRO BAR STOOL



The Siro bar stool is a beautifully proportioned high stool with a lowered backrest that resembles a handle. It is made of oak, waxed or stained black. The footrest is brass or black painted metal. You can choose between a wooden or a fabric or leather upholstered seat.

4470 SIRO BAR STOOL 65 oak	38,5x43x82,5/65 cm
4470U SIRO BAR STOOL 65 oak upholstered	38,5x43x82,5/66,5
4479 SIRO BAR STOOL 65 black	38,5x43x82,5/65
4479U SIRO BAR STOOL 65 black upholstered	38,5x43x82,5/66,5

Design: Ilkka Suppanen and Raffaella Mangiarotti

TWIGGY



Twiggy is a visually light table. The structure is a beautiful play of sticks which can be seen under the glass top. This table is multifunctional and easy to move around. The oak frame is polished with wax and the ash frame is stained white or black.

Oak	Black	White	
45700W	46700WB	46700WW	S 44x44x45,5 cm
46702W	46702WB	46702WW	M 66,5x66,5x38,5
46703W	46703WB	46703WW	L 44x88x45,5
46704W	46704WB	46704WW	XL 88x88x38,5

Design: Ilkka Suppanen and Raffaella Mangiarotti

The pattern variations on the oak surface are unique. They are not defects but individual features, resulting from the growth of the wood. The patterns tell the story of the tree's life – e.g. the flamelike zebra stripes are actually medullary rays that transfer water and nutrients to the inner parts of the trunk.

BED



The Woodnotes bed has a wooden frame and base and is also available without the base. Bed sides are upholstered. Also available with four sides (can be used without the headboard).

Fabrics: Sand and Das, on request Steelcut Trio 3 and COM (customer's own fabric).

47010 BED with base	90x200	160x200	180x200 cm
47011 BED with base			180x210
47005 BED frame only		160x200	180x200
			180x210

Other sizes are supplied to order. Bed frame height 30 or 40 cm. Headboard to be ordered separately.

BED HEADBOARD



The Woodnotes bed headboard is upholstered with Sand paper yarn cotton fabric. The dustless and anti-static upholstery is ideal for the bedroom. It can also be used together with benches. The headboard has a wooden frame. It is also available in two elements.

Fabrics: Sand and Das, on request Steelcut Trio 3 and COM (customers own fabric)

47001A BED HEADBOARD	95x105-360 cm
47001C BED HEADBOARD	110x105-360
47001B BED HEADBOARD	125x105-360

Other sizes are available on order.

QUILTED BED HEADBOARD



The Woodnotes lightly padded headboard is simple, but not boring. Its beautiful, checkered structure and slender appearance is soft, relaxed and natural. There is no hard frame, the quilted bed headboard is hung on the wall. The inner padding is polyester.

Fabrics: Sand and Das, on request Steelcut Trio 3 and COM (customers own fabric)

4705 QUILTED HEADBOARD	max height 90 cm
	max width 282

Standard height: 90 cm
Standard widths: 90, 109, 126, 143, 160, 177, 195, 212, 230, 247, 265, 282 cm

Other sizes are available on order. One square is 17.5 x 17.5 cm.
Design: Ulla Koskinen

WHISPER



Whisper is an environmentally friendly acoustic panel made from pure and safe raw materials. Wooden frame, filled with fire-resistant recycled polyester insulation. Cover is upholstered with Sand paper yarn cotton fabric. Excellent audio-technological features. Suspension with wall rails.

Suggested applications: residential and contract

4801	A0606	60x60x4 cm
	A0808	80x80x4
	B0606	60x60x10
	B0808	80x80x10
	A0612	60x120x4
	B0612	60x120x10

Available also in reversed measures. Other sizes are available on order.
Design: Tapio Anttila

MY AND MINI MY



Soft but sturdy, these lounge chairs are designed for casual, relaxed seating. The cover is removable and changeable. The filling of these practical chairs is a mixture of materials that is guaranteed to stay in shape. Mini My completes the lounge chair family. The Saimaa fabric and the special moist-proof inner material are intended for outdoor use e.g. for a terrace, balcony or pool area.

Fabrics: Sand, Das and Saimaa, on request Steelcut Trio 3 and COM (customers own fabric).

4611 MY	95x140x85 cm
4610 MINI MY	75x110x70

Design: Ulla Koskinen

ROO



Roo is long and divan-like, inviting you to take a moment to rest. The Saimaa fabric and the special moist-proof inner material are intended for outdoor use e.g. for a terrace, balcony or pool area.

Fabrics: Sand, Das and Saimaa, on request Steelcut Trio 3 and COM (customers own fabric).

4612 ROO	95x180x85 cm
----------	--------------

Design: Ulla Koskinen

REST MY



My lounge chair upholstered with the Rest fabric. Rest allows the use of leftover materials from the Sand upholstery fabric.

Stripe pattern design Mari Isopahkala and Tanja Sipilä

461179151 REST MY	
Black - Stone - White	95x140x85 cm

BENCH



Woodnotes benches are upholstered and they have a wooden frame with 5 cm high wooden (birch or stained black) or metal feet. Benches in sizes 40x40 cm and diam. 60 cm are supplied with button feet (height 1,5 cm).

Fabrics: Sand and Das, on request Steelcut Trio 3, Hallingdal and COM (customers own fabric).

45601 BENCH	40/50 cm x 40 - 160 cm x 43 cm
45605 ROUND BENCH	Ø 60x43 Ø 90x43 Ø 120x43

Other sizes and heights are available on order.

Design: Ulla Koskinen

Sand, Saimaa and Das fabric specifications and colour charts: see page 92.

UPHOLSTERY FABRICS



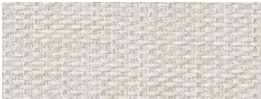
25355 WOODPECKER NATURAL



25359 WOODPECKER NATURAL – BLACK



02 DAS LIGHT BEIGE



50 DAS STONE



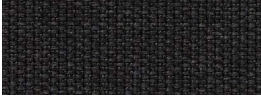
07 DAS LIGHT GREY



51 DAS GREY



52 DAS DARK GREY



55 DAS BLACK



2580101 SAIMAA NATURAL WHITE



2580501 SAIMAA LIGHT SAND



2583040 SAIMAA PEARL GREY



2584040 SAIMAA GRAPHITE



2580240 SAIMAA MELANGE GREY



2580440 SAIMAA NAVY BLUE



25611 SAND WHITE



25615 SAND WHITE – NATURAL




25655 SAND NATURAL



256151 SAND STONE – WHITE



25659 SAND NATURAL – BLACK



256159 SAND STONE – BLACK

WOODPECKER
Material: 100% paper yarn
Weight: 843 g/m²
Fabric width: 147 cm
Mar tindale: 50.000
Woodpecker paper yarn upholstery fabric is designed for furniture at the home and in public spaces.
Design: Ritva Puotila

SAIMAA OUTDOOR/INDOOR
Material: 100% polypropene
Weight: 550 g/m²
Fabric width: 160 cm
Martindale: 30.000
Resistant to chlorine, salt, mildew and bacteria. Warms like wool and is thermoregulating and transpiring.
Design: Ritva Puotila

DAS
Material: 50% PP, 31% PES, 19% CO
Weight: 658 g/m²
Fabric width: 140 cm
Martindale: 36.000
Natural look and resistant to wear. The fabric's high light-fastness prevents the colours from fading. Easy to clean.

SAND
Material: 70% paper yarn, 30% cotton
Weight: 660 g/m²
Fabric width: 160 cm
Martindale: 50.000
Sand paper yarn cotton upholstery fabric is designed for furniture in the home and in public spaces. It is supplied with soil-repellent treatment.
Design: Ritva Puotila

ACCESSORIES

COOL CUSHIONS



Cool cushion has an inner pillow filled with a high-density plastic foam and is well suited as a seat, ottoman or side table. All cushion cases are closed with a Velcro band.

Fabrics: Sand and Das

434 COOL CUSHION	50x50x32 cm
435 COOL CUSHION	60x60x32
436 ROUND COOL CUSHION	Ø 60x32

Design: Ritva Puotila and Minna Ahokas

REST CUSHION

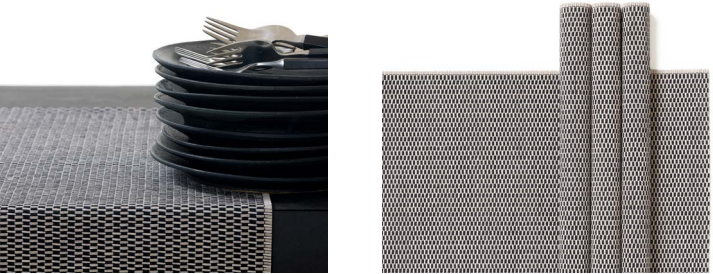


The design of the Rest fabric began with the use of leftover materials from the Sand upholstery fabric. The pattern of the Rest cushions is slightly different on each side. The beautiful, earthy tones match a variety of decorations. Rest cushions have a lining and due to the sturdiness of the fabric they can be used as floor cushions. Inner pillow with 100% ecological cotton case filled with GRS-certified recycled 100% PET-bottle polyester.

4331711 WHITE	50x50 cm
43317151 STONE – WHITE	50x50
433173434 BRASS	50x50
433174040 GRAPHITE	50x50

Design: Mari Isopahkala and Tanja Sipilä

PLACE MATS



The collection features place mats made of paper yarn, woven onto a cotton warp. The material has been soil-repellent-treated. There are four designs available: Morning, Open Sky, Vista and Cloud (see page 94).

Size: 35x45 cm (4 pcs/package)

Design: Ritva Puotila

TABLE RUNNERS



The collection features table runners made of paper yarn, woven onto a cotton warp. The material has been soil-repellent treated. There are four designs available: Morning, Open Sky, Vista and Cloud (see page 94).

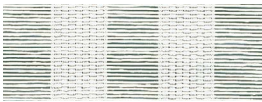
Sizes: 35x120, 35x180 cm

Other lengths are available on order. 45 cm wide table runners are available on order (only in blind fabric colours).

Design: Ritva Puotila



31311 VISTA WHITE



31211 OPEN SKY WHITE



31111 MORNING WHITE



3140101 CLOUD WHITE



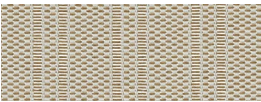
31315 VISTA WHITE - NATURAL



31215 OPEN SKY WHITE - NATURAL



31115 MORNING WHITE - NATURAL



3140105 CLOUD WHITE - NATURAL



313115 VISTA WHITE - STONE



312115 OPEN SKY WHITE - STONE



311115 MORNING WHITE - STONE



3140115 CLOUD WHITE - STONE



31395 VISTA BLACK - NATURAL



3124040 OPEN SKY GRAPHITE



311915 MORNING BLACK - STONE



31399 VISTA BLACK



3124009 OPEN SKY GRAPHITE - BLACK



31195 MORNING BLACK - NATURAL



31191 MORNING BLACK - WHITE



31199 MORNING BLACK



3114040 MORNING GRAPHITE



3114015 MORNING GRAPHITE - STONE

BOX ZONE CONTAINERS



Box Zone containers offer many ways to store goods both at home and in the office.

BOX ZONE

360	15x15x15 cm
361	20x20x20
362	30x30x30
361A	20x20x15
362B	30x30x20

Design: Minna Ahokas

BEACH BAG



The lightweight beach bag is available in three sizes. Ideal bags for summer, weekend trips, groceries etc.

4175 BEACH BAG S	40x34x12,5 cm
4174 BEACH BAG M	52x37x20
4173 BEACH BAG L	65x48x20

Design: Minna Ahokas

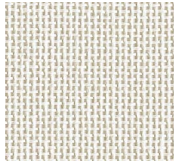
BRIEFCASE



Briefcase is an ideal light case for papers, catalogues etc.

4181 BRIEFCASE	37x26x2 cm
----------------	------------

Design: Minna Ahokas



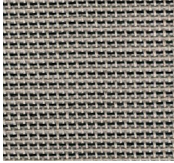
11 PLAIN WHITE



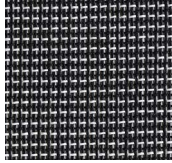
55 PLAIN NATURAL



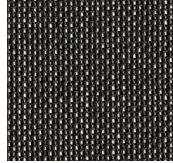
1515 PLAIN STONE



159 PLAIN STONE - BLACK



91 PLAIN BLACK - WHITE



99 PLAIN BLACK

ACCESSORY FABRICS

PLAIN

Material: 100% paper yarn
Design: Ritva Puotila

SEABORN



Seaborn throw is well suited for example for a bed.

Quality: hand-knitted 100% paper yarn
Sizes: 110x200, 140x200 cm

Other sizes available on request. Tolerance during use ±10%.

Design: Ritva Puotila

VEIL



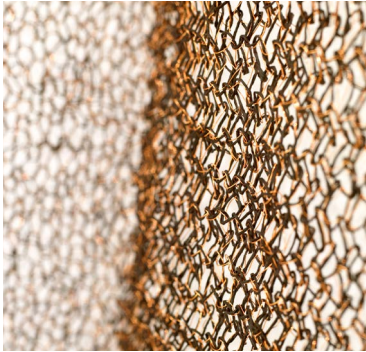
Veil curtain can be used as a cloud-like curtain or a room divider.

Quality: hand-knitted 100% paper yarn
Sizes: 130x240, 130x290 cm

Other sizes available on request. Tolerance during use ±10%.

Design: Ritva Puotila

MESH



Mesh partition gets its interesting glow effect from metal wires. It also works as a throw.

Quality: hand-knitted paper yarn and copper or steel
Sizes: 130x240, 130x290 cm

Other sizes available on request. Tolerance during use ±10%.

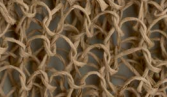
Design: Ritva Puotila



**47201 SEABORN
CLOUD**



**47215 SEABORN
STONE**



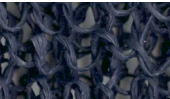
**47205 SEABORN
NATURAL**



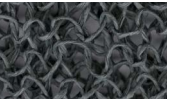
**47203 SEABORN
DRY STRAW**



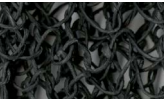
**47204 SEABORN
SKY**



**47210 SEABORN
DARK BLUE**



**47240 SEABORN
GRAPHITE**



**47209 SEABORN
BLACK**



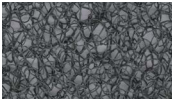
**7210101 VEIL
WHITE**



**7211515 VEIL
STONE**



**7210505 VEIL
NATURAL**



**7214040 VEIL
GRAPHITE**



**7210404 VEIL
DARK BLUE**



**7210909 VEIL
BLACK**



**7111605 MESH
WENGE - COPPER**



**7110905 MESH
BLACK - COPPER**



**7110902 MESH
BLACK - STEEL**

NOTE

Due to technical reasons the colours in the brochure may not fully correspond to the actual colours.

Woodnotes facts

-
We follow the principle of sufficient packaging: when packaging our products, we only use the amount of packaging material necessary to protect the products. We do not overprotect them. The boxes are recyclable with other cartonboard.



PAPER YARN CARPET
SAN FRANCISCO 1430432
DARK BLUE-NUTRIA

Cover image: Reijo Nenonen
S. 3 ja 56 Sonja Tyrri
S. 9 ja 32 Mikko Paartola
S. 12, 14, 17 ja 33 Riitta Weijola
S. 21 Ville Kangas
S. 26 Mari Hirsikallio
S. 31 Anne Saarinen
S. 42 Jani Riekkinen
s. 39 Hannu Laatonen
Vastavalo.net

QUOTES BY THE WOODNOTES TEAM



Ritva Puotila
Co-Founder,
Textile Artist



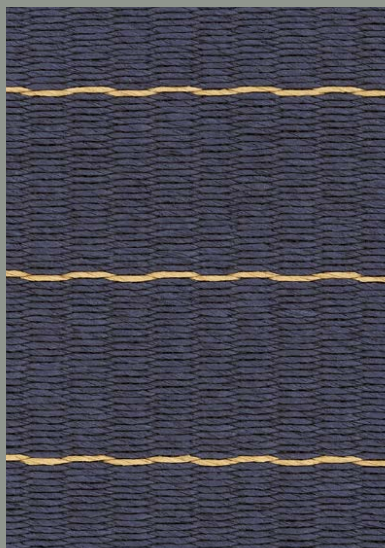
Johanna Vuorio
CEO



Irmeli Saarenpää
Production
Supervisor



Minna Ahokas
Designer, Product
Development
Coordinator



WOODNOTES

WOODNOTES OY
TALLBERGINKATU 1B,
00180 HELSINKI, FINLAND
TEL +358 9 694 2200
woodnotes@woodnotes.fi
www.woodnotes.fi
[@woodnotesdesign](https://www.instagram.com/woodnotesdesign)

2025